

3M™ Particulate Respirator 8511

Product Description:

This disposable N95 particulate respirator features the proprietary 3M™ Cool Flow™ Valve and helps provide comfortable, reliable worker respiratory protection. It is ideally suited for hot/dusty work settings that require long periods of wear.



- NIOSH approved for at least 95 percent filtration efficiency against certain non-oil based particles
- 3M™ Cool Flow™ Exhalation Valve helps reduce heat build-up inside the respirator
- M-Noseclip adjusts easily for fewer pressure points and greater comfort
- 3M Cool Flow Exhalation Valve reduces heat build-up inside the respirator
- Designed to increase comfort and wear ability

3M™ Versaflo™ Easy Clean PAPR Kit TR-300N+ ECK

Product Description:

The 3M™ Versaflo™ TR-300N+ ECK is a complete, ready to use HE PAPR system that is easy to clean and maintain. Suggested industries include: Pharmaceutical, Healthcare and Food Safety. Provides protection against particulates.



- Conveniently disposable - Save time cleaning with our maintenance-free disposable hood
- Connect quickly - Our innovative Quick Release Swivel (QRS) connects quickly and helps avoid kinks in the breathing tube
- Two selectable flow rate options - 6.5 CFM and 7.2 CFM - offers more options and comfort to the user
- Easy-to-use and versatile PAPR system for particulate environments
- High Efficiency particulate filter



STELLAR INDUSTRIAL SUPPLY

ALBANY (541) 967-8500	BILLINGS (406) 896-0066	EVERETT (425) 259-9241	PORTLAND (503) 253-3100	SAN LUIS OBISPO (805) 543-5177	
SEATTLE (206) 768-1800	SPOKANE (509) 532-9100	TACOMA (253) 383-2700	TAMPA (813) 885-2343	TUCSON (520) 791-3026	UPLAND (909) 946-8039



Science.
Applied to Life.™



NEW! 3M™ Silver Cut-off Wheels

Cut to the chase.

Get the long-life and fast cutting action of 3M Precision-Shaped Grain – now in a cut-off wheel designed to give you great performance and a great value!

Ideal for industries such as:

- Agricultural, industrial and construction machinery
- General metal fabrication
- Oil and gas infrastructure
- Rail
- Shipbuilding
- Stainless steel fabrication
- Structural steel
- Tank and vessel



A cut above the rest

Does your cut-off wheel give up before the job is done? Does it heat up and slow to a crawl after a few cuts? Does it give you a rough, ragged kerf? Well, if your cut-off wheel just can't cut it, here's great news:

New 3M™ Silver Cut-off Wheels are a new kind of premium performance wheel designed to be affordable for everyday use. Featuring 3M Precision-Shaped Grain technology, these innovative wheels cut cool, to deliver fast, smooth cutting action on all types of ferrous metals, stainless steels and alloy steels. And customers report that they last longer than competitive aluminum oxide and alumina zirconia wheels. That means fewer wheel changes and more finished parts per wheel, to help improve shop productivity and control your costs.

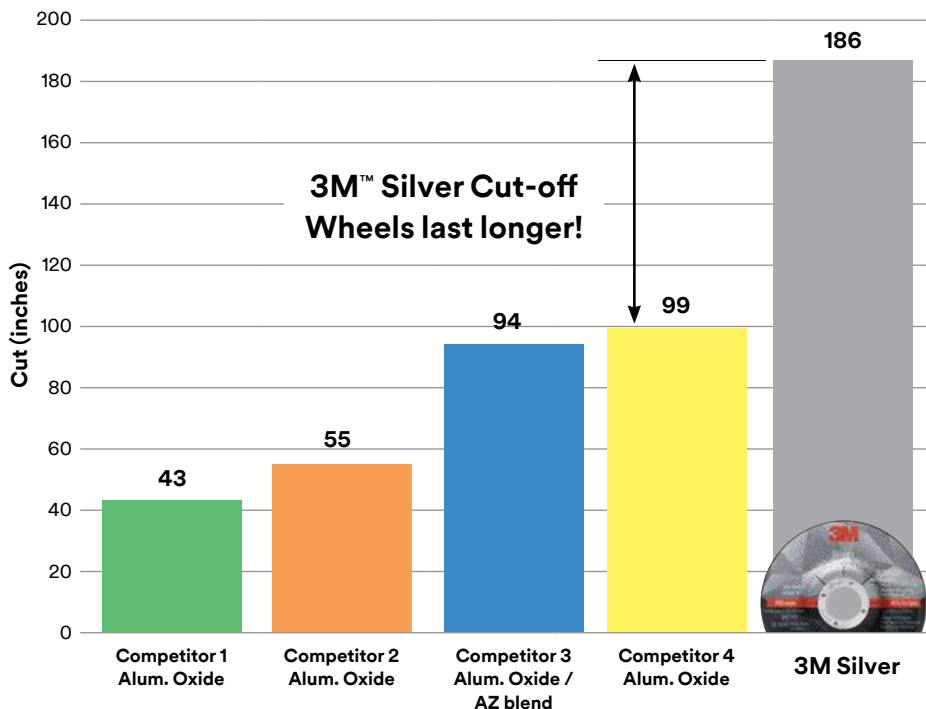
Make short work of cutting pipes, tubes, flat sheets and more.

Optimized for use on carbon steel and stainless steel.

► Tech tip – Size matters

Wheel thickness affects wheel performance. The thicker the wheel, the longer the life and the slower the cut rate. When cutting thicker material, use a thicker and larger diameter wheel to maximize wheel life. Thinner wheels cut faster and wear faster. They also work better on thin gauge materials.

Wheel life



Internal 3M testing on 304L stainless steel sheet (11 gauge) using a 13 amp electric tool. Wheels are tested to end of life.

Success stories: Metal fabrication

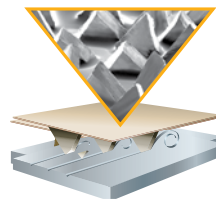
When cutting steel and stainless steel tubing assemblies, this customer reports **50% less wear** with 3M Silver Cut-off Wheels vs. their standard aluminum oxide wheel.

For cutting structural metal sheet and plate, 3M Silver Cut-off Wheels demonstrated **40% less wear** than this customer's usual AZ wheel.

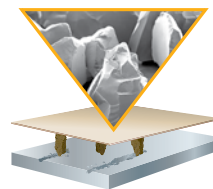
3M™ Silver Cut-off Wheels – Type 1

Diameter × Thickness × Arbor Hole (inches)	UPC	Max. RPM	Quantity (Inner/Case)
3 × .035 × ¼	051125-87457-1	25,465	25/50
3 × .035 × ⅜	051125-87458-8	25,465	25/50
3 × .060 × ⅜	051125-87459-5	25,465	25/50
4 × .035 × ¼	051125-87460-1	19,100	25/50
4 × .035 × ⅜	051125-87461-8	19,100	25/50
4 × .060 × ⅜	051125-87462-5	19,100	25/50
4 × .125 × ⅜	051125-87657-5	19,100	25/50
4.5 × .040 × ⅜	051125-87464-9	13,300	25/50
4.5 × .045 × ⅜	051125-87465-6	13,300	25/50
5 × .045 × ⅜	051125-87467-0	12,250	25/50
6 × .045 × ⅜	051125-87469-4	10,200	25/50
7 × .045 × ⅜	051125-87471-7	8,500	25/50

The science of precision-shaped grain



3M precision-shaped grain uses 3M microreplication technology to form sharp peaks that easily “slice” through metal — cutting cooler, faster and lasting longer than conventional abrasive grain.



Conventional ceramic abrasive grain tends to “plow” through the metal, causing heat to build up in the workpiece and the abrasive — resulting in a slower cut and shorter wheel life.

3M™ Silver Cut-off Wheels – Type 27

Diameter × Thickness × Arbor Hole (inches)	UPC	Max. RPM	Quantity (Inner/Case)
4.5 × .045 × ⅜	051125-87466-3	13,300	25/50
4.5 × .090 × ⅜	051125-87659-9	13,300	25/50
5 × .045 × ⅜	051125-87468-7	12,250	10/20
6 × .045 × ⅜	051125-87470-0	10,200	10/20

Got a need for speed?
For an even faster cut rate,
try 3M™ Cubitron™ II Abrasives.



Complete your lineup with 3M metalworking products.

Lightweight but rugged, these hard-working power tools are designed with a high power-to-weight ratio to help operators get more work done in less time.

- Easily cuts through everything from standard rebar to oversized bolts
- Model 28826 provides greater versatility and control, with right angle head and easily-repositionable guard

Optimize your performance – with genuine 3M™ Power Tools!



Model #	20233	28771	28826
Description	3M™ Cut-off Wheel Tool 20233, 3" 1HP	3M™ Cut-off Wheel Tool 28771, 4" 1HP	3M™ Cut-off Wheel Tool 28826, 4 ½" - 5" 1.5 HP
Maximum RPM	25,000	19,000	12,000
UPC	051141-20233-4	051141-28771-3	051141-28826-0



Model #	28403	28405	28824
Description	3M™ Grinder 28403, 4" 1HP	3M™ Grinder 28405, 4½" 1HP	3M™ Grinder 28824, 4 ½" - 5" 1.5 HP
Maximum RPM	12,000	12,000	12,000
UPC	051141-28403-3	051141-28405-7	051141-28824-6

▶ Tech tip

Powering up for performance

- Cut-off wheels perform better the faster they run, so having a tool able to maintain speed is crucial.
- The higher the tool power, the easier it can maintain speed, resulting in faster cut time and longer wheel life.
- When the tool speed decreases, wheel wear typically increases.
- **DO NOT** exceed the maximum operating speed listed on the wheel!

Stay safe on the job with 3M™ Personal Protective Equipment



Lighter weight, more comfortable welding helmet with advanced auto-darkening optics that adjust to your working conditions.
3M™ Speedglas™ Welding Helmet 9002NC
 (PN 04-0100-20NC)

Protect your head and face against sparks, chips and debris.
3M™ Ratchet Headgear and Face Protection
 (PN 82783-00000)

Comfortable eye protection with anti-fog lenses for a clear view of your workplace.
3M™ SecureFit™ Protective Eyewear
 (PN SF401AF)

Quick, comfortable hearing protection that stays clean even when your hands are dirty.
3M™ E-A-R™ UltraFit Corded Earplugs
 (PN 340-4004)

Product Selection and Use: Many factors beyond 3M's control and uniquely within user's knowledge and control can affect the use and performance of a 3M product in a particular application. As a result, customer is solely responsible for evaluating the product and determining whether it is appropriate and suitable for customer's application, including conducting a workplace hazard assessment and reviewing all applicable regulations and standards (e.g., OSHA, ANSI, etc.). Failure to properly evaluate, select, and use a 3M product and appropriate safety products, or to meet all applicable safety regulations, may result in injury, sickness, death, and/or harm to property.

Warranty, Limited Remedy, and Disclaimer: Unless a different warranty is specifically stated on the applicable 3M product packaging or product literature (in which case such warranty governs), 3M warrants that each 3M product meets the applicable 3M product specification at the time 3M ships the product. 3M MAKES NO OTHER WARRANTIES OR CONDITIONS, EXPRESS OR IMPLIED, INCLUDING, BUT NOT LIMITED TO, ANY IMPLIED WARRANTY OR CONDITION OF MERCHANTABILITY, FITNESS FOR A PARTICULAR PURPOSE, OR ARISING OUT OF A COURSE OF DEALING, CUSTOM, OR USAGE OF TRADE. If a 3M product does not conform to this warranty, then the sole and exclusive remedy is, at 3M's option, replacement of the 3M product or refund of the purchase price.

Limitation of Liability: Except for the limited remedy stated above, and except to the extent prohibited by law, 3M will not be liable for any loss or damage arising from or related to the 3M product, whether direct, indirect, special, incidental, or consequential (including, but not limited to, lost profits or business opportunity), regardless of the legal or equitable theory asserted, including, but not limited to, warranty, contract, negligence, or strict liability.



Abrasive Systems Division
 3M Center, Building 223-6S-03
 St. Paul, MN 55144-1000
 1-866-279-1235
www.3M.com/abrasives

Cubitron, EAR, SecureFit, Speedglas and 3M are trademarks of 3M Company.
 Used under license by 3M subsidiaries and affiliates.

Distributed By:



Introducing the new

3M™ Performance Industrial Spray Gun

Engineered for the industrial painter.

The 3M™ Performance Spray Gun is the industrial coating solution that can help reduce variability in your process and boost productivity by giving technicians a smarter way to spray.



Lightweight and Durable

One of the lightest spray guns in the industry, the impact-resistant composite body is built to withstand demanding industrial environments.



Low Maintenance and Easy

Simple, intuitive design means fewer parts to maintain or rebuild and can help achieve more consistent performance whether you're a beginner or a pro.



Replaceable Nozzles

With quick-change replaceable atomizing heads ranging from 1.1 to 2.0, it's like getting a brand new spray gun with every new nozzle.



Built for Versatility

Sprays a wide range of coatings, including stains, primers, basecoats, topcoats, clearcoats, and adhesives – from either a pressure-fed system or with 3M™ PPS™ Series 2.0 Spray Cup System.



Spray Gun and Systems

Part No.	Components
3M™ Performance Industrial Spray Gun System 26878	Spray gun, air control valve, pressure whip, pressure and gravity atomizing heads, PPS Series 2.0
3M™ Performance Spray Gun 26832	Spray gun and air control valve

Replacement Parts and Accessories

Part No.	Product
3M™ Performance Spray Gun	
26833	Pressure Whip
26839	Ball Valve
26835	Locking Collar
26840	Rebuild Kit
26834	Whip Pin
26838	Needle

Atomizing Head Refill Kits

Part No.	Color	Size
Pressure		
26811	Yellow	1.1
26814	Orange	1.4
26818	Clear	1.8
26830	Variety Kit	3 sizes (1.1, 1.4, 1.8)
Gravity		
26712	Blue	1.2
26713	Green	1.3
26714	Orange	1.4
26716	Purple	1.6
26718	Clear	1.8
26720	Red	2.0
26730	Variety Kit	6 sizes (1.2, 1.3, 1.4, 1.6, 1.8, 2.0)

Ditch the old systems.

The high-maintenance metal guns that require more fuss than they're worth, the spray cans, the paint brushes and rollers – try the new 3M™ Performance Spray Gun and help bring consistency and quality back into your paint operations.

For industrial/occupational use only.
Not for consumer sale or use.



Automotive Aftermarket Division
3M Center
Building 223-06S-07
St. Paul, MN 55144-1000
1-877-666-2277

Product Selection and Use: Many factors beyond 3M's control and uniquely within user's knowledge and control can affect the use and performance of a 3M product in a particular application. As a result, customer is solely responsible for proper evaluation (including, but not limited to, fitness for purpose and suitability of application), selection, and use of 3M products. Safety products should always be selected and used in accordance with all applicable regulations and standards (e.g., OSHA, ANSI, and others), after conducting a proper hazard assessment. Failure to properly evaluate, select, and use a 3M product may result in injury, sickness, death, and/or harm to property. **Warranty, Limited Remedy, and Disclaimer:** Unless a different warranty is specifically stated on the applicable 3M product packaging or product literature (in which case such warranty governs), 3M warrants that each 3M product meets the applicable 3M product specification at the time 3M ships the product. 3M MAKES NO OTHER WARRANTIES OR CONDITIONS, EXPRESS OR IMPLIED, INCLUDING, BUT NOT LIMITED TO, ANY IMPLIED WARRANTY OR CONDITION OF MERCHANTABILITY, FITNESS FOR A PARTICULAR PURPOSE, OR ARISING OUT OF A COURSE OF DEALING, CUSTOM, OR USAGE OF TRADE. If the 3M product does not conform to this warranty, then the sole and exclusive remedy is, at 3M's option, replacement of the 3M product or refund of the purchase price.

Limitation of Liability: Except for the limited remedy stated above, and except to the extent prohibited by law, 3M will not be liable for any loss or damage arising from the 3M product, whether direct, indirect, special, incidental, or consequential (including, but not limited to, lost profits or business opportunity), regardless of the legal or equitable theory asserted, including, but not limited to, warranty, contract, negligence, or strict liability. 3M and PPS are trademarks of 3M Company. All other trademarks are property of their respective owners. Please recycle. Printed in USA. © 3M 2020. All rights reserved. 60-4405-0001-9

Distributed By:

